

Product Code	Shaft Length (mm)	Working length max (mm)	EXTERNAL DIAMETER (mm)	UNITS PER BOX
FP ELCB50	50	270	12.5	3
FP ELCB150	150	370	12.5	3
FP ELCB250	250	470	12.5	3

Model	Colour	Reloading Unit Type	Staple Line Length L2/mm	Open Staple Height H/mm	Closed Staple Height H/mm	Degree of Articulation W/°	Staple Quantity	Staple Crown (mm)	Units per Box				
NER30-2.0	●	Reversed Stepped Reloading unit	32	2.0	0.75	45	48	3	6				
NER30-2.5	○			2.5	1.00					1.00	1.00		
NER30-3.5	●			3.5	1.35					1.50	1.65		
NER30-4.0	●			4.0	1.60					1.75	1.90		
NER45-2.0	●		44	44	2.0		0.75	66		3	6		
NER45-2.5	○				2.5		1.00					1.00	1.00
NER45-3.5	●				3.5		1.35					1.50	1.65
NER45-4.0	●				4.0		1.60					1.75	1.90
NER45-4.8	●		60	60	4.8		1.85	90		3	6		
NER60-2.0	●				2.0		0.75					0.75	0.75
NER60-2.5	○				2.5		1.00					1.00	1.00
NER60-3.5	●				3.5		1.35					1.50	1.65
NER60-4.0	●	Reversed Reloading unit with Curved Tip	44	4.0	1.60	90	3	6					
NER60-4.8	●			4.8	1.85				2.00	2.15			
NEPR30-2.0	●			32	32				2.0	0.75	48	3	6
NEPR30-2.5	○								2.5	1.00			
NEPR30-3.5	●	3.5	1.35			1.50	1.65						
NEPR30-4.0	●	4.0	1.60			1.75	1.90						
NEPR45-2.0	●	44	44	2.0	0.75	66	3	6					
NEPR45-2.5	○			2.5	1.00				1.00	1.00			
NEPR45-3.5	●			3.5	1.35				1.50	1.65			
NEPR45-4.0	●			4.0	1.60				1.75	1.90			
NEPR45-4.8	●	60	60	4.8	1.85	90	3	6					
				2.0	0.75				0.75	0.75			
				2.5	1.00				1.00	1.00			
				3.5	1.35				1.50	1.65			

# POWERED ENDOSCOPIC STAPLER

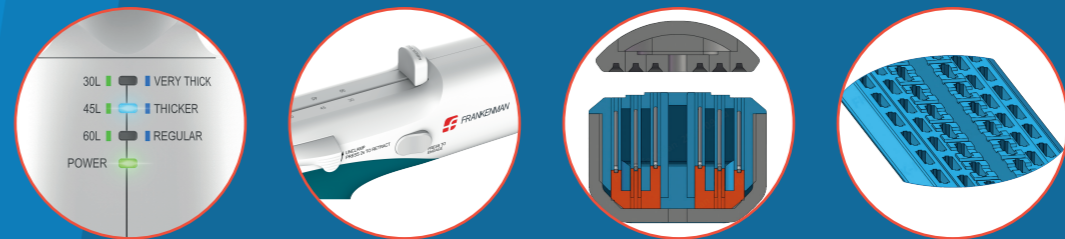
WITH TISSUE THICKNESS SENSING TECHNOLOGY & SMART FIRING



**FRANKENMAN**



The Frankenman Academy is proud to promote several training courses in numerous surgical disciplines with expert faculty to cover both didactic elements and "hands on" skills workshops.



POWER02/2024A

[www.frankenman.com](http://www.frankenman.com) | [info@frankenman.co.uk](mailto:info@frankenman.co.uk) | +86-512-68786150

Frankenman International Ltd - 108 Jinfeng South Road, High New District, - Suzhou, 215163, P.R. China



WHEN YOU PUT PATIENTS' HEALTH FIRST,  
**REMARKABLE THINGS HAPPEN**

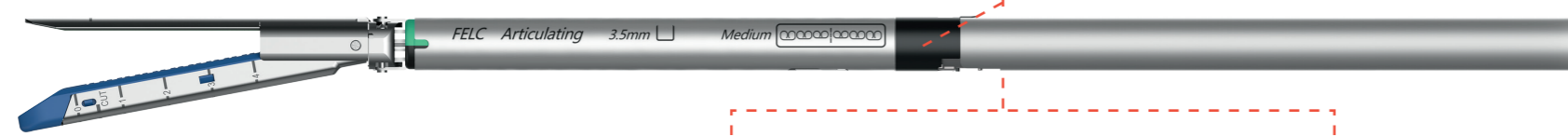
**Frankenman Powered Endoscopic stapler** is able to provide the appropriate firing speed on different tissue thicknesses introducing the highest standards of safety and robustness required by our customers in different surgery disciplines. Our new concept is based on the results achieved in different kind of tissue conditions and consistency with optimised staple forming.



**Tissue thickness Sensing Technology:** Powered stapler will sense the tissue during the closing and a led will show the different tissue thickness before firing: "Regular", "Thicker" or "Very thick". The integrated chip for Intelligent tissue identification will recognise the right application facilitating the application on that specific tissue.



**Digital reload identification:** reload length 30/45/60 automatically identified and shown on the display.

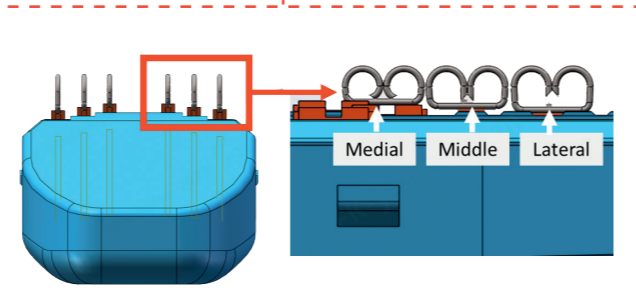


**Articulation:** improved click feedback.

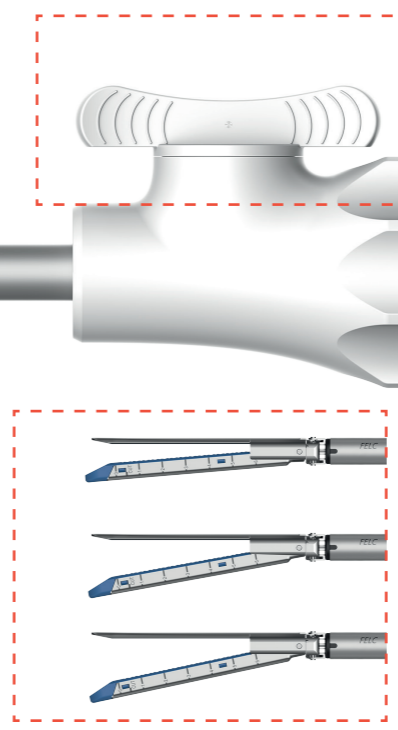
**Firing Status:** the progress can be visualized.

**Intuitive Control:** all controls available on both sides.

**Smart Firing Speed:** Powered stapler will calibrate the speed level to optimise the staple formation, fast speed for the "Regular" tissue, medium speed for "Thicker" tissue, slow speed for "Very thick" tissue.

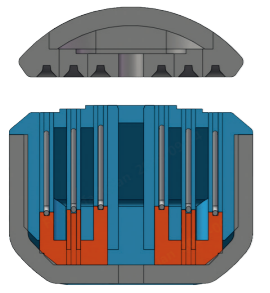


**Different height pushers make a different staple forming height, to get a strong anastomosis.**



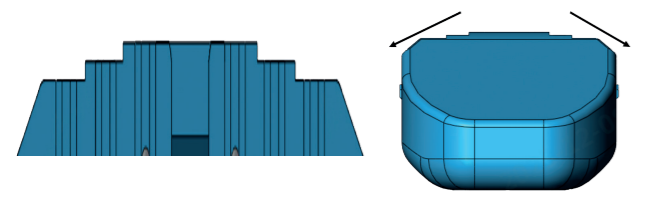
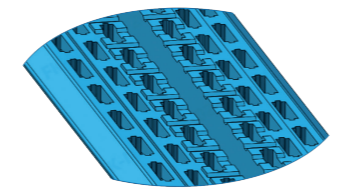
**Opening adjustment:** total control of the jaw opening, intermediate positions and progressive clamping which improves stability during tissue compression.  
**Time of compression:** sound feedback from 10s to 15s after clamping.

**Ergonomics & weight balance:** light and comfortable solution in your hands.



**Pushing Staple Technology:** Increased balance between hemostasis and blood perfusion in the anastomosis thanks to the new variable compression solution having more margin to maintain closure of the staple leg in all staple lines.

**Wavy Grip Solution:** The wavy surface of the reload holds the tissue firmly in place, preventing the slippage during the cutting process and retraction of the blade.



**Triple-tiered reload surface:** 0,15mm step difference design. The double-sided slanted structure makes the tissue slide on both sides after being compressed for better thickness and proper staple forming.



**Integrated Overload Protections:** an unexpected resistance can be protected automatically. After solving the problem, the stapler can be used for additional firings just replacing the reload. Both powered retraction and manual retraction are allowed.

**Battery pack:** with indicator lights give you control of the charge.

